

2-4GHz Driver

GaAs Monolithic Microwave IC

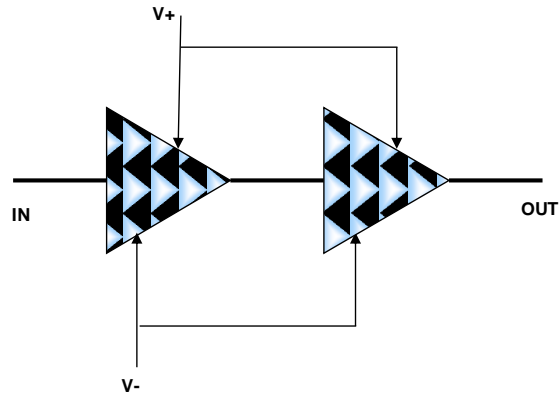
Description

The CHA4105-99F is a monolithic two-stage driver amplifier delivering 24dBm output power @ 1dB gain compression in the 2-4GHz frequency range.

It is designed for a wide range of applications, from military to commercial communication systems.

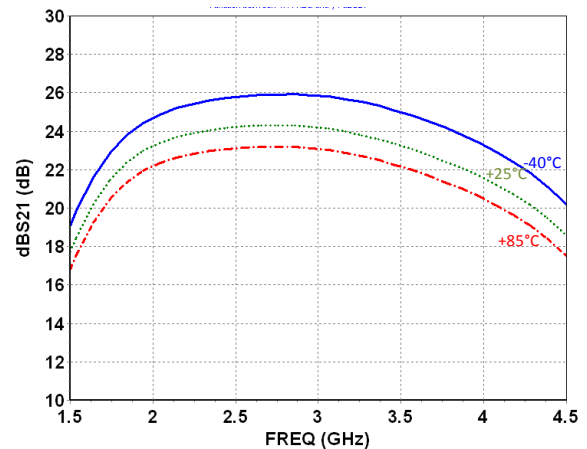
The circuit is manufactured with a pHEMT process, 0.25µm gate length, via holes through the substrate, air bridges and electron beam gate lithography.

It is available in chip form.



Main Features

- Broadband performances: 2-4GHz
- 24dBm @ 1dB gain compression
- 23dB Gain
- DC bias: V+ = 5V ; V- = -5V
- DC power consumption: 180mA
- Chip size: 1.74 x 1.6 x 0.1 mm



Main Characteristics

Tamb.= +25°C

Symbol	Parameter	Min	Typ	Max	Unit
Freq	Frequency range	2		4	GHz
Gain	Linear Gain		23		dB
P_1dB	Output Power @1dB comp.		24		dBm

ESD Protections: Electrostatic discharge sensitive device. Observe handling precautions!

Main Characteristics

Tamb.= +25°C

Symbol	Parameter	Min	Typ	Max	Unit
Freq	Frequency range	2		4	GHz
Gain	Linear Gain		23		dB
RL_in	Input Return Loss		15		dB
RL_out	Output Return Loss		18		dB
P_1dB	Output power @ 1dB gain compression		24		dBm
PAE_1dB	Power Added Efficiency @ 1dBcomp.		28		%
Psat	Output power at saturation		25.5		dBm
V+	Positive supply voltage		5		V
V-	Negative supply voltage		-5		V
I+	Positive supply quiescent current ⁽¹⁾		180		mA
I-	Negative supply quiescent current		5		mA
I+_1dB	Positive current @ 1dB gain compression		220		mA

These values are representative of onboard measurements as defined on the drawing in paragraph "Evaluation mother board".

⁽¹⁾ Parameter can be adjusted by tuning of V-.

Absolute Maximum Ratings ⁽¹⁾

Tamb.= +25°C

Symbol	Parameter	Values	Unit
V+	Positive supply voltage	6.5V	V
I+	Positive supply quiescent current	240	mA
V-	Negative supply voltage	-3.75	V
Tj	Junction temperature ⁽²⁾	175	°C
Cmp	Compression level	6	dB
I+_sat	Supply current in saturation	320	mA
Ta	Operating temperature range	-40 to +85	°C
Tstg	Storage temperature range	-55 to +155	°C

⁽¹⁾ Operation of this device above anyone of these parameters may cause permanent damage.

⁽²⁾ Thermal Resistance channel to ground paddle = 89°C/W for T= +85°C.

Typical on-wafer Sij parameters

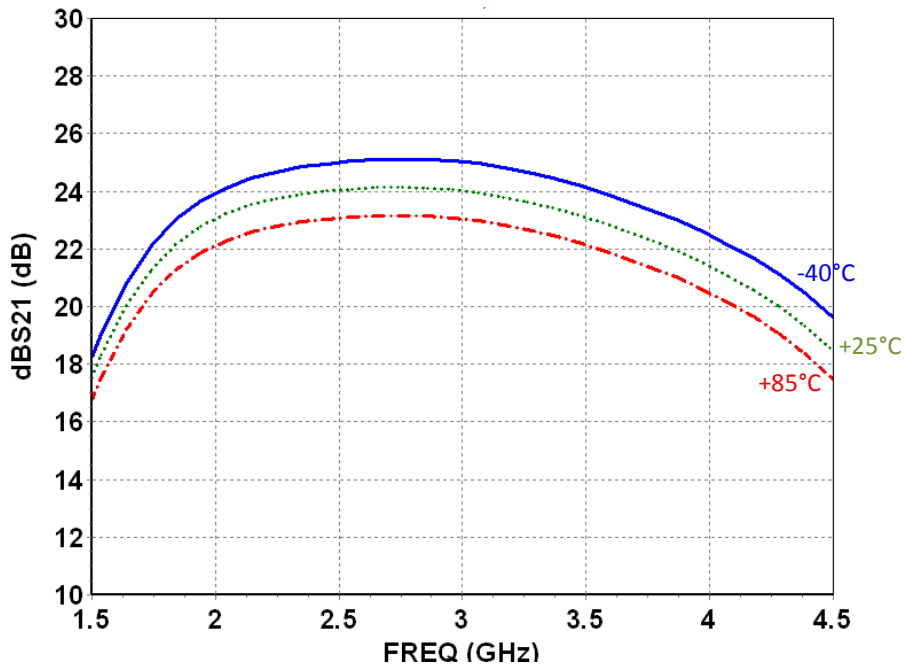
Tamb.= +25°C, V+ = +8V, I+ = 180mA

Freq (GHz)	S11 (dB)	PhS11 (°)	S12 (dB)	PhS12 (°)	S21 (dB)	PhS21 (°)	S22 (dB)	PhS22 (°)
0.10	-0.36	-6.99	-69.84	178.30	-33.96	-95.60	-0.58	-15.89
0.50	-1.29	-27.40	-39.33	-1.72	-11.29	117.70	-1.96	-72.56
1.00	-1.94	-61.11	-39.27	-124.00	-1.79	146.90	-6.02	-141.70
1.50	-8.45	-129.10	-40.31	125.30	17.67	68.32	-14.87	154.80
2.00	-19.45	-9.13	-42.17	33.05	22.70	-40.78	-39.04	-50.42
2.50	-16.35	-40.67	-42.04	-40.67	23.65	-119.90	-20.64	-64.11
3.00	-27.33	-65.04	-41.93	-107.90	23.97	167.90	-19.19	-97.03
3.50	-18.68	37.43	-42.83	-173.80	23.21	98.09	-24.13	-50.70
4.00	-19.87	-55.35	-44.60	126.30	21.53	30.41	-14.51	-33.10
4.50	-9.94	160.10	-46.99	66.06	18.51	-37.00	-9.41	-46.44
5.00	-4.07	106.30	-50.19	1.40	13.84	-95.76	-6.39	-63.91
5.50	-2.17	74.95	-54.83	-50.90	9.24	-141.90	-4.74	-79.58
6.00	-1.47	54.99	-57.93	-75.28	5.80	176.20	-3.73	-92.33
6.50	-1.27	41.32	-56.29	-107.10	3.30	127.00	-3.02	-102.30
7.00	-1.01	32.22	-59.51	-174.20	-1.03	63.07	-2.30	-110.50
7.50	-0.65	23.53	-73.34	139.70	-8.82	11.05	-1.71	-119.30
8.00	-0.48	15.71	-65.74	-158.40	-16.52	-22.61	-1.30	-127.50
8.50	-0.41	9.02	-70.70	76.88	-23.22	-47.81	-0.98	-134.70
9.00	-0.34	3.12	-75.00	-91.93	-28.39	-70.68	-0.76	-141.20
9.50	-0.28	-2.20	-67.47	23.62	-33.03	-93.57	-0.57	-147.30
10.00	-0.23	-7.02	-57.14	-31.86	-36.77	-111.10	-0.45	-153.30

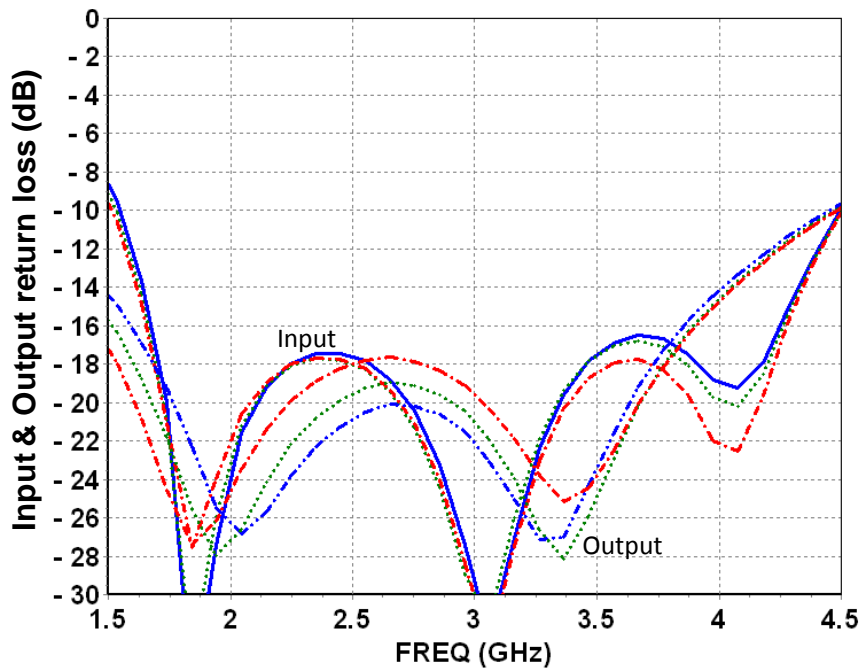
Typical Test fixture Measurements

V+ = +5V, V- = -5V, I+ = 180mA, I- = 2mA

Linear Gain



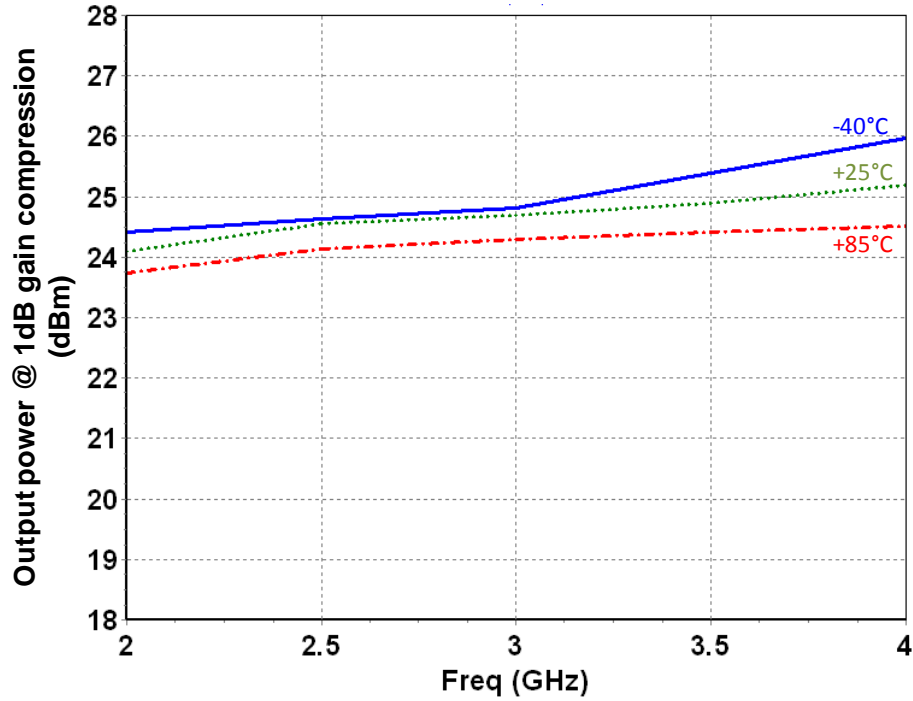
In/out Return Loss



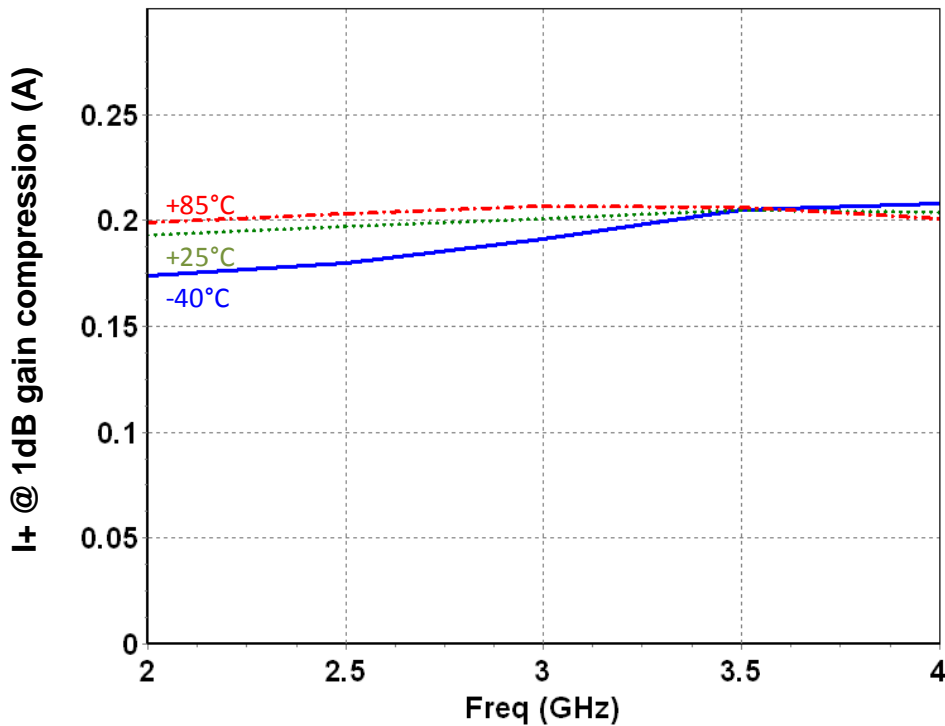
Typical Test fixture Measurements

V+ = +5V, V- = -5V, I+ = 180mA, I- = 2mA

Output power @ 1dB gain compression versus Frequency & Temperature



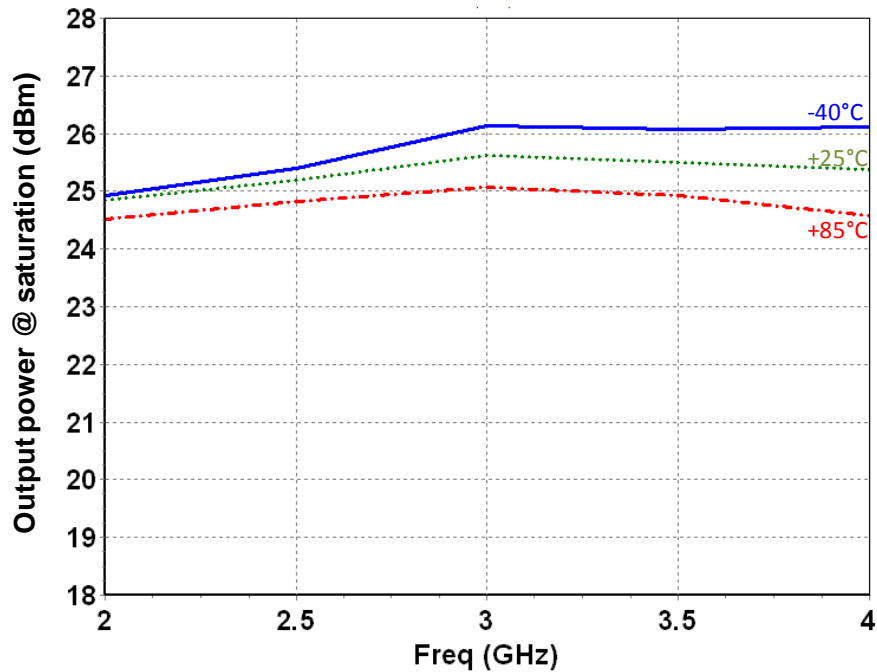
Positive supply current @ 1dB gain compression versus Frequency & Temperature



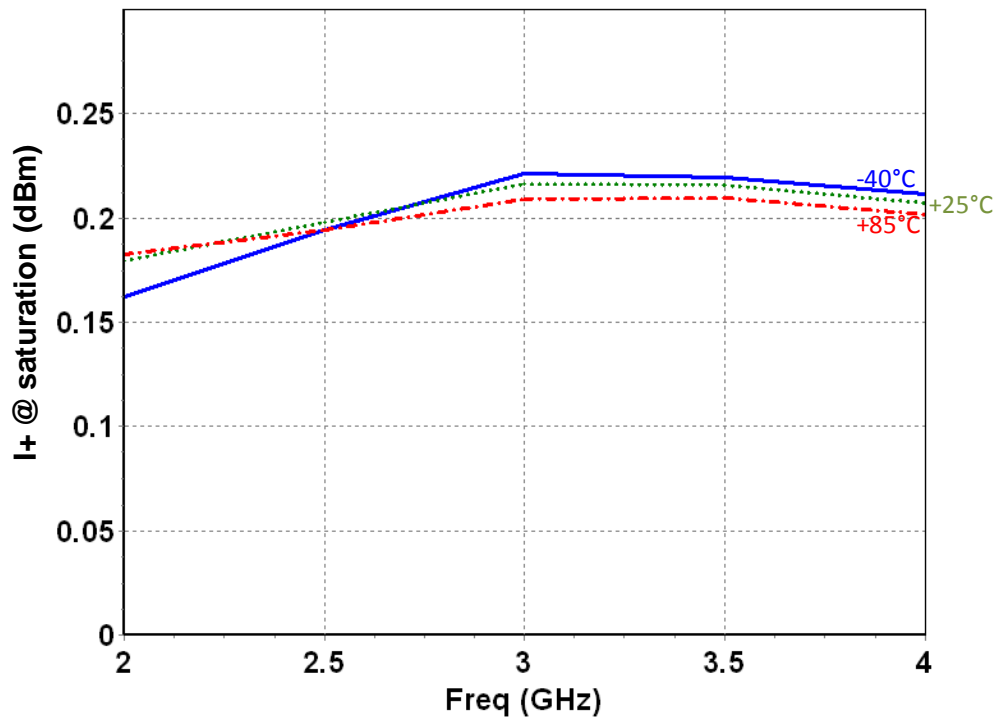
Typical Test fixture Measurements

V+ = +5V, V- = -5V, I+ = 180mA, I- = 2mA

Output power @ saturation versus Frequency & Temperature



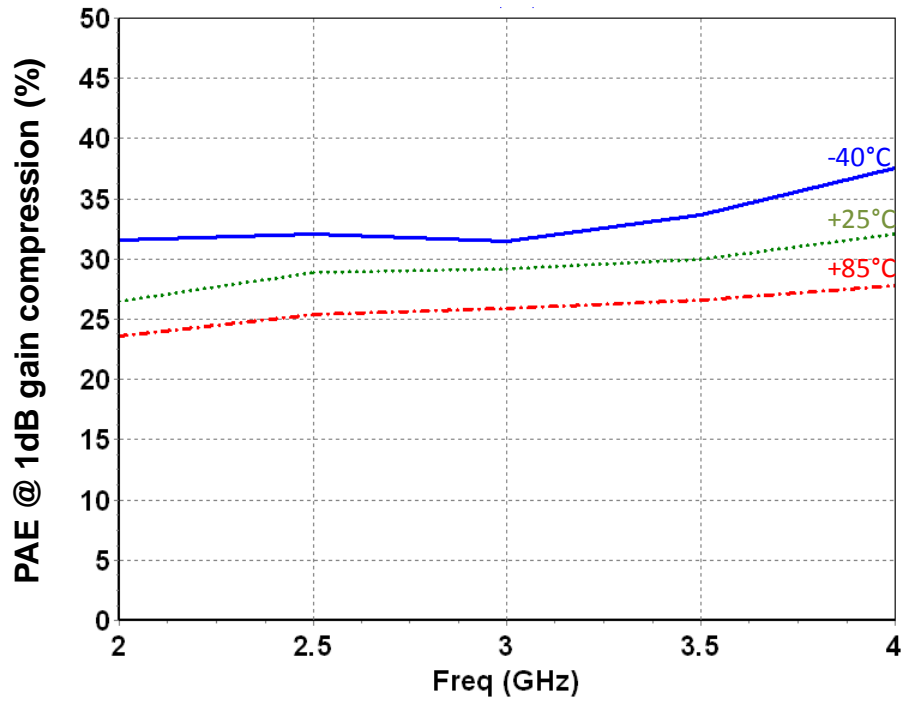
Positive supply current @ saturation versus Frequency & Temperature



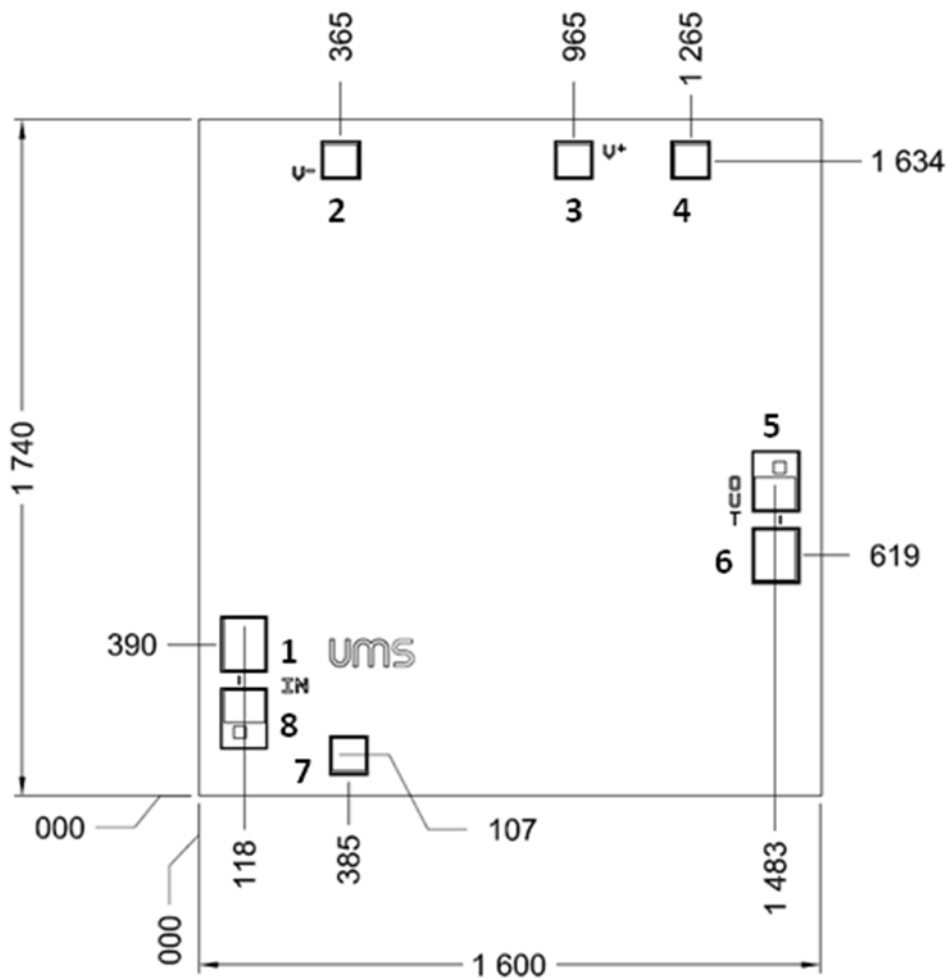
Typical Test fixture Measurements

V+ = +5V, V- = -5V, I+ = 180mA, I- = 2mA

Power Added Efficiency (PAE) @ 1dB gain compression versus Frequency & Temperature



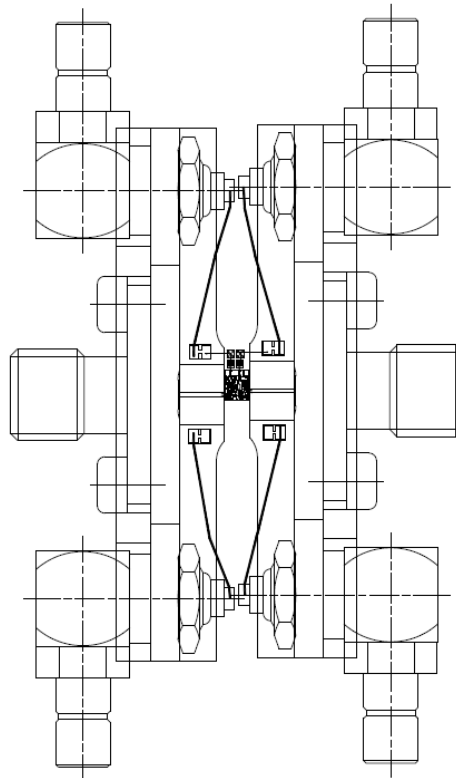
Mechanical data



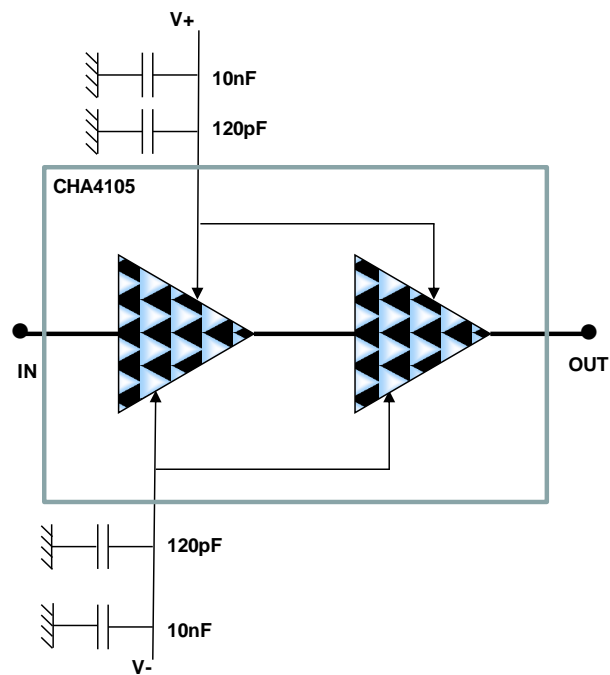
All dimensions are in micrometers
 Chip size = 1740x1600 ±35µm
 Chip thickness = 100µm ±10µm
 RF pads (1, 6) = 122 x 144µm²
 DC pads (2, 3, 4) = 100 x 100µm²

Pin number	Pin name	Description
1	IN	Input RF
2	-V	Gate supply voltage
3	+V	Drain supply voltage
4, 5, 7, 8	GND	Ground (no bonding required)
6	OUT	Output RF

Test fixture 61498835



Recommended assembly plan



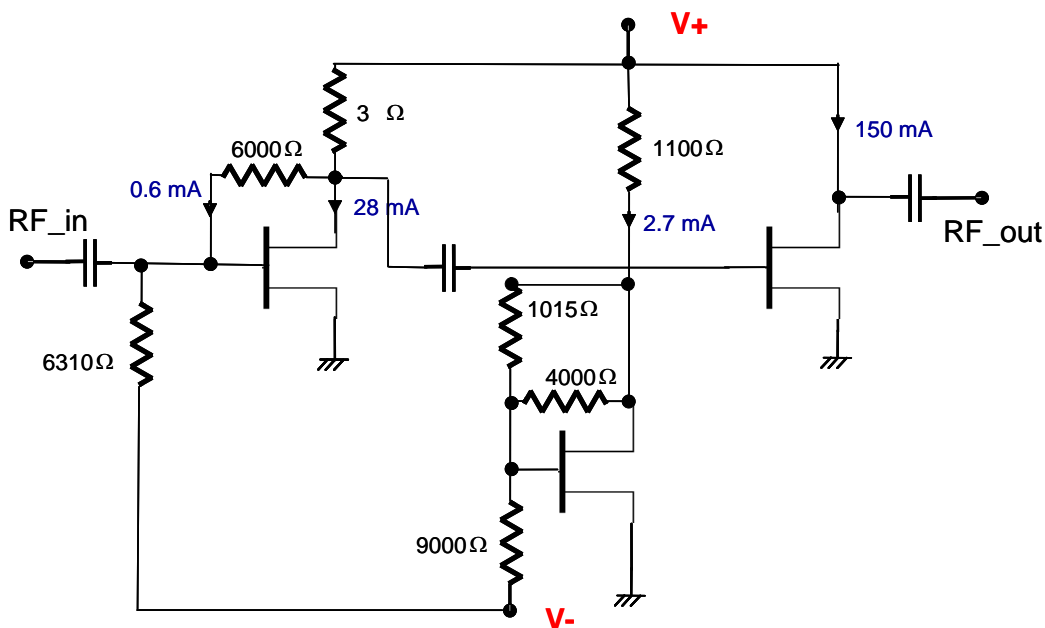
Bonding recommendations

The RF, DC and modulation port inter-connections should be done according to the following table:

Port	Connection
IN (pad 1)	Inductance (L_{bonding}) = 0.3nH 400 μm length with wire diameter of 25 μm x2
OUT (pad 6)	Inductance (L_{bonding}) = 0.3nH 400 μm length with wire diameter of 25 μm x2
DC pads to 1 st decoupling level for single bonding	Inductance (L_{bonding}) = 0.8nH one wire: diameter 25 μm , length 1mm
1 st decoupling level to 2 nd decoupling level for single bonding	Inductance (L_{bonding}) = 0.8nH one wire: diameter 25 μm , length 1mm

DC Schematic

Driver : 5V, 180mA



Notes



Recommended ESD management

Refer to the application note AN0020 available at <http://www.ums-gaas.com> for ESD sensitivity and handling recommendations for the UMS products.

Ordering Information

Chip form: CHA4105-99F/00

Information furnished is believed to be accurate and reliable. However **United Monolithic Semiconductors S.A.S.** assumes no responsibility for the consequences of use of such information nor for any infringement of patents or other rights of third parties which may result from its use. No license is granted by implication or otherwise under any patent or patent rights of **United Monolithic Semiconductors S.A.S.** Specifications mentioned in this publication are subject to change without notice. This publication supersedes and replaces all information previously supplied. **United Monolithic Semiconductors S.A.S.** products are not authorised for use as critical components in life support devices or systems without express written approval from **United Monolithic Semiconductors S.A.S.**