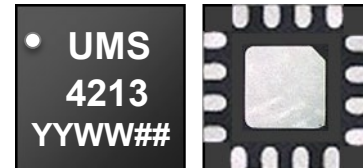


15-25GHz, 3-Way Power Divider/Combiner

GaAs Monolithic Microwave IC in SMD leadless package

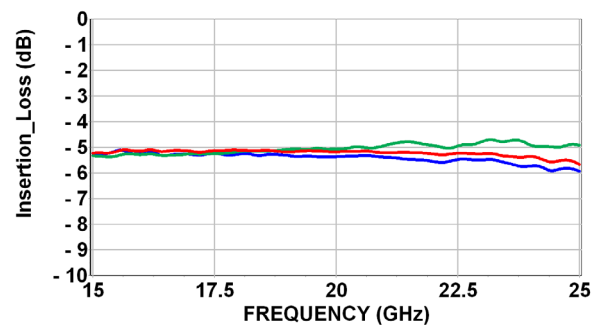
Description

The CHW4213-QAG is a 3-way 0° Power divider/Combiner designed for wideband operation from 15 to 25GHz. It supports many applications including phase array radars, 5G applications as well as satellites communications and Test & Measurements. The circuit is manufactured on GaAs passive technology dedicated for high performance. It is supplied in RoHS compliant 3x3mm SMD package.



Main Features

- Broadband performances: 15-25GHz
- Insertion Loss (above 4.8 dB): 0.5dB
- Isolation in the range of 20dB
- Good amplitude unbalance: < 0.5dB
- Very good phase unbalance: +/- 2°
- 16L QFN3x3
- MSL1



Path: S->1 Path S->2 Path S->3

Main Electrical Characteristics

Tamb.= +25°C

Symbol	Parameter	Min	Typ	Max	Unit
Freq	Frequency range	15		25	GHz
IL	Insertion Loss (above 4.8 dB)		0.5		dB
Isolation	Isolation		20		dB
AU	Amplitude Unbalance		0.5		dB
PU	Phase Unbalance		+/-2		°

CHW4213-QAG 15-25GHz, 3-Way Power Divider/Combiner

Specifications

Tamb.= +25°C,

Symbol	Parameter	Min	Typ	Max	Unit
Freq	Frequency range	15		25	GHz
IL	Insertion Loss (above 4.8 dB)		0.5		dB
Isolation	Isolation		20		dB
AU	Amplitude Unbalance		0.5		dB
PU	Phase Unbalance		+/-2		°
RL_Sum	Return Loss (Port Sum)		18		dB
RL_123	Return Loss (Port 1-2-3)		28		dB
PH	Power Handling			20	dBm

These values are representative of on board measurements as defined on the drawing in paragraph "Evaluation board".

The reference planes used for Sij measurements presented in this document are located at 0.8mm offset from the package edges.

Absolute Maximum Ratings ⁽¹⁾T_{amb.} = +25°C

Symbol	Parameter	Values	Unit
P _{in}	Maximum input power (AMR)	20	dBm

⁽¹⁾ Operation of this device above this parameter may cause permanent damage.**Temperature Range**

T _a	Operating temperature range	-40 to +85	°C
T _{stg}	Storage temperature range	-55 to +150	°C

CHW4213-QAG 15-25GHz, 3-Way Power Divider/Combiner

Typical Package Sij parameters

Tamb.= +25°C.

The reference planes used for Sij measurements presented in this document are located at 0.8mm offset from the package edges.

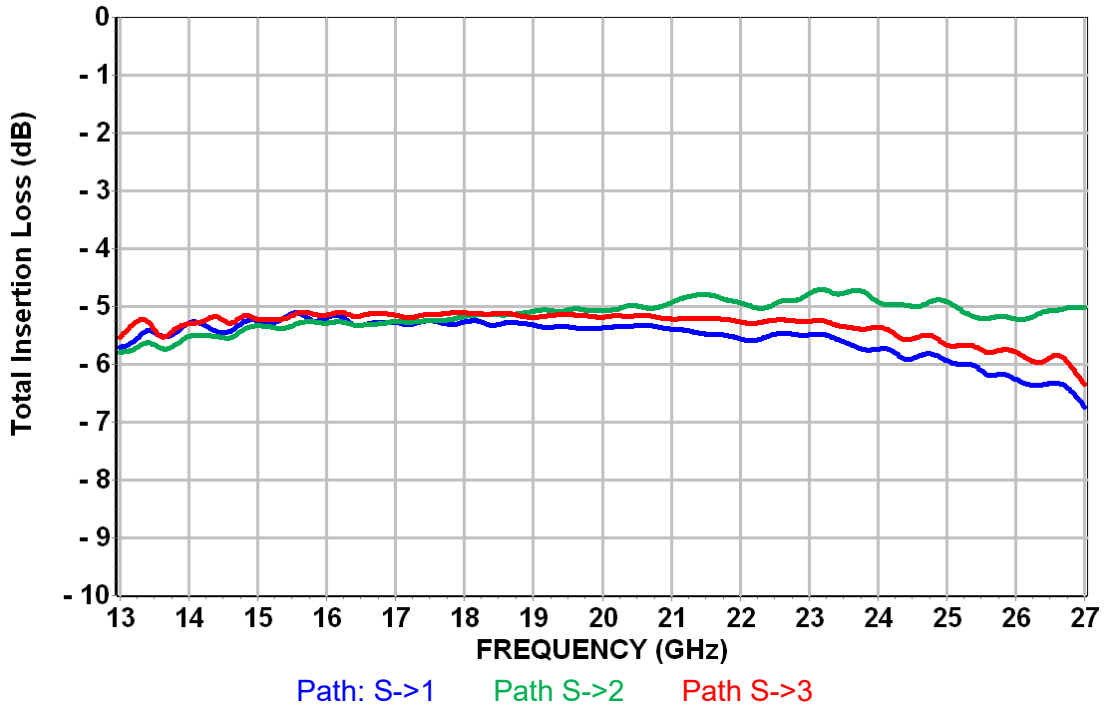
Path : S->3

Freq (GHz)	S11 (dB)	PhS11 (°)	S12 (dB)	PhS12 (°)	S21 (dB)	PhS21 (°)	S22 (dB)	PhS22 (°)
13,00	-10,06	-0,03	-5,54	144,08	-5,53	144,40	-23,55	34,75
13,50	-11,99	-9,52	-5,30	136,05	-5,30	136,38	-23,79	33,80
14,00	-12,39	-10,52	-5,30	126,14	-5,29	126,46	-23,54	26,56
14,50	-12,87	-17,53	-5,31	117,38	-5,30	117,71	-23,62	20,82
15,00	-13,84	-21,40	-5,22	108,05	-5,22	108,38	-23,39	14,74
15,50	-14,72	-45,33	-5,31	100,27	-5,31	100,54	-24,52	6,81
16,00	-18,02	-39,99	-5,15	90,75	-5,14	91,03	-24,47	-1,70
16,50	-20,27	-28,42	-5,10	81,51	-5,10	81,78	-25,25	-7,70
17,00	-19,05	-33,71	-5,15	72,02	-5,14	72,29	-26,80	-18,27
17,50	-22,40	-30,42	-5,14	63,31	-5,14	63,58	-28,50	-27,12
18,00	-22,39	-10,51	-5,11	54,15	-5,10	54,38	-30,70	-37,81
18,50	-26,16	-17,70	-5,15	45,18	-5,14	45,40	-33,77	-42,43
19,00	-26,24	11,84	-5,19	36,04	-5,18	36,27	-38,51	-65,58
19,50	-19,66	14,01	-5,11	27,02	-5,10	27,30	-48,65	-122,87
20,00	-22,98	32,69	-5,18	17,99	-5,17	18,25	-39,37	130,59
20,50	-20,88	2,68	-5,16	8,59	-5,14	8,84	-36,47	125,15
21,00	-19,46	28,66	-5,22	-0,53	-5,20	-0,28	-32,61	105,36
21,50	-19,19	26,74	-5,25	-10,05	-5,24	-9,85	-31,69	102,00
22,00	-17,72	17,79	-5,27	-18,83	-5,26	-18,55	-28,98	88,97
22,50	-15,92	19,52	-5,32	-28,13	-5,31	-27,95	-28,15	83,78
23,00	-16,53	2,66	-5,25	-37,48	-5,25	-37,19	-27,60	75,16
23,50	-14,37	8,84	-5,37	-47,12	-5,37	-46,91	-27,68	67,42
24,00	-14,30	1,08	-5,36	-56,74	-5,35	-56,47	-27,24	52,66
24,50	-10,80	-0,25	-5,60	-67,00	-5,59	-66,81	-27,53	45,48
25,00	-10,62	-18,46	-5,67	-75,56	-5,66	-75,35	-28,06	33,76
25,50	-9,19	-27,66	-5,85	-85,59	-5,84	-85,40	-28,08	14,75
26,00	-9,94	-37,99	-5,79	-94,83	-5,78	-94,58	-27,05	-2,19
26,50	-9,03	-46,79	-5,99	-105,15	-5,98	-104,88	-26,30	-25,33
27,00	-9,73	-56,66	-5,01	-112,00	-5,04	-111,65	-24,71	-64,52

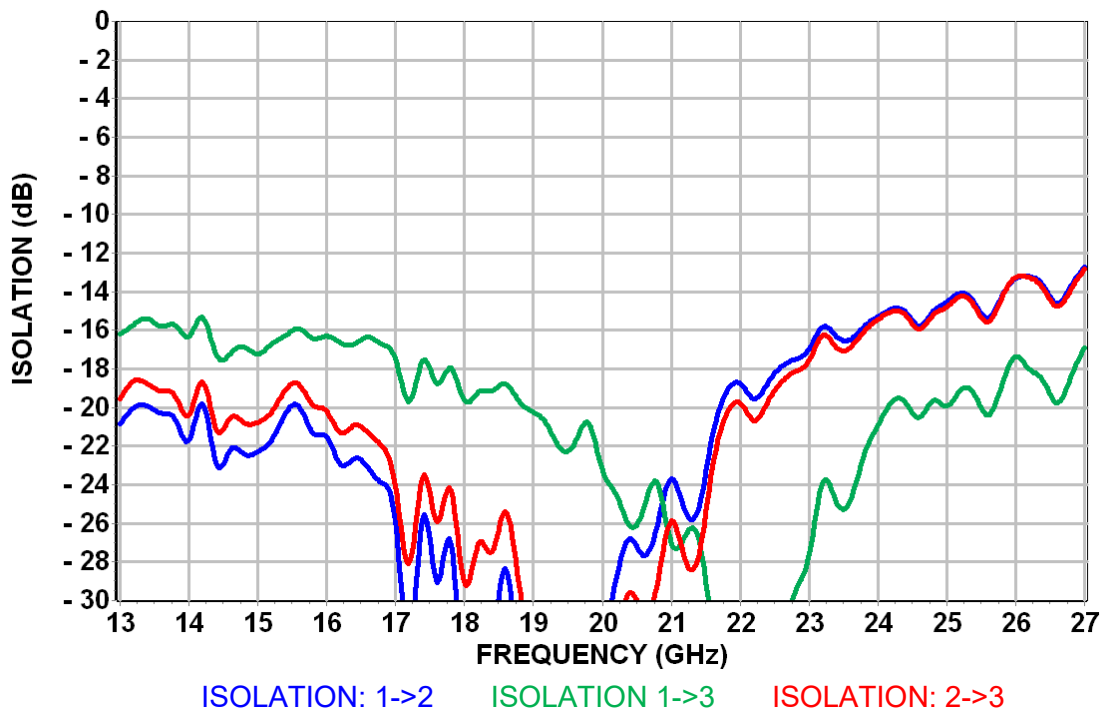
Typical Board Measurements

Tamb.= +25°C (see "Evaluation board for measurements accuracy using RF probes")

Total Insertion Loss versus Frequency



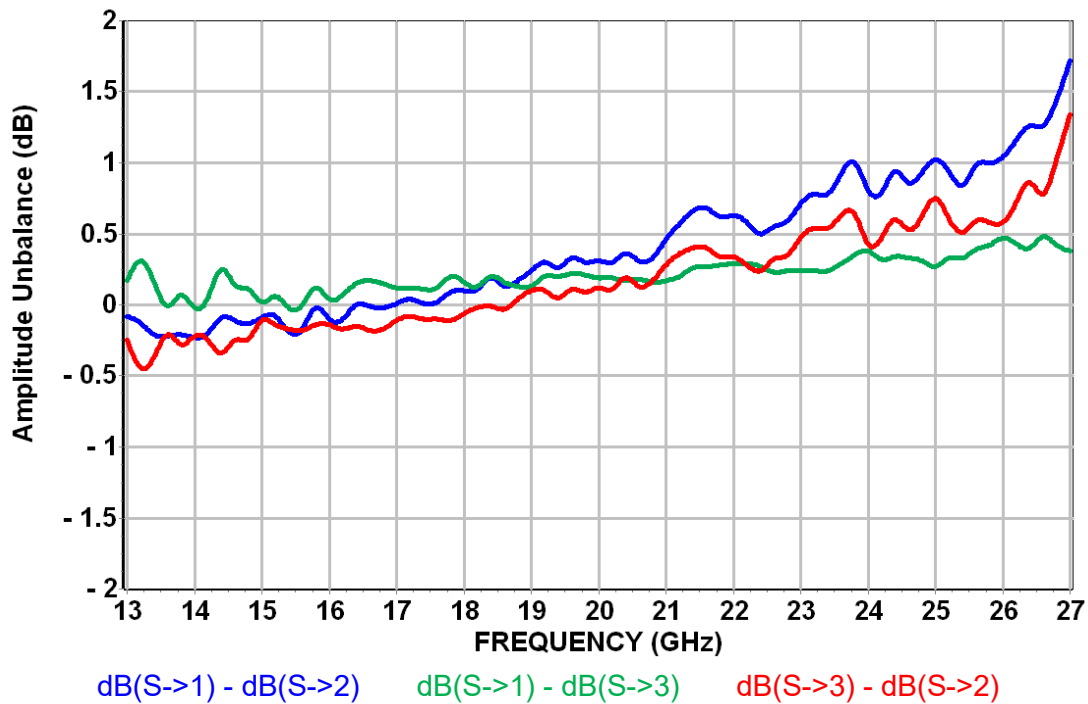
Isolation versus Frequency



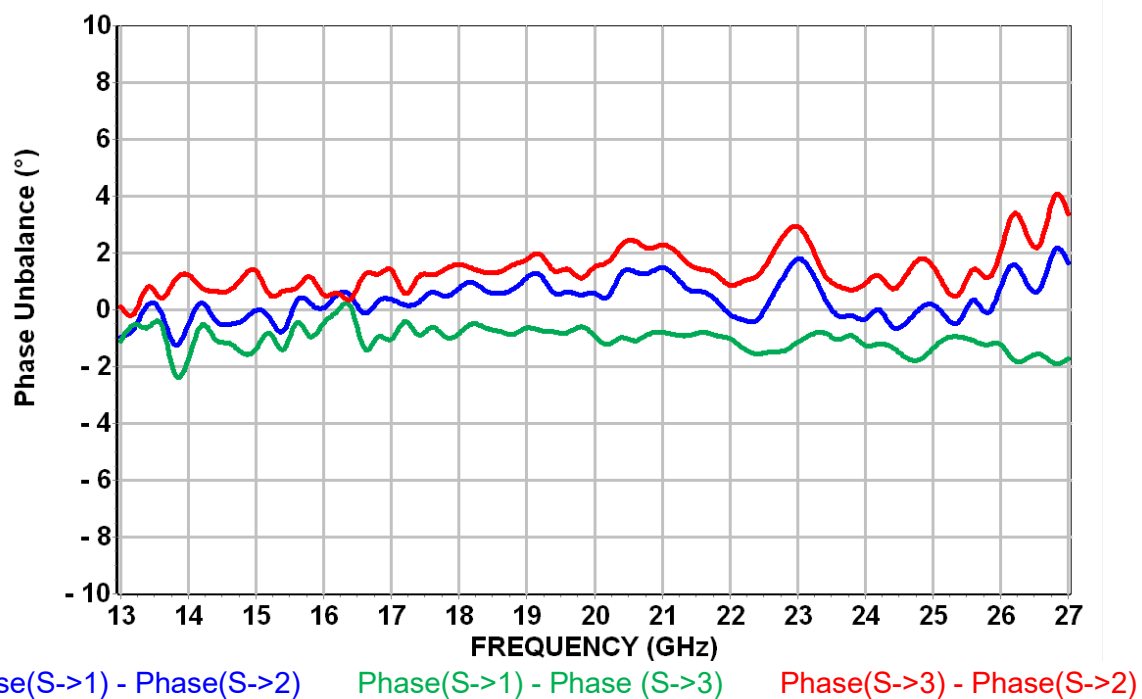
Typical Board Measurements

Tamb.= +25°C (see “Evaluation board for measurements accuracy using RF probes”)

Amplitude Unbalance versus Frequency



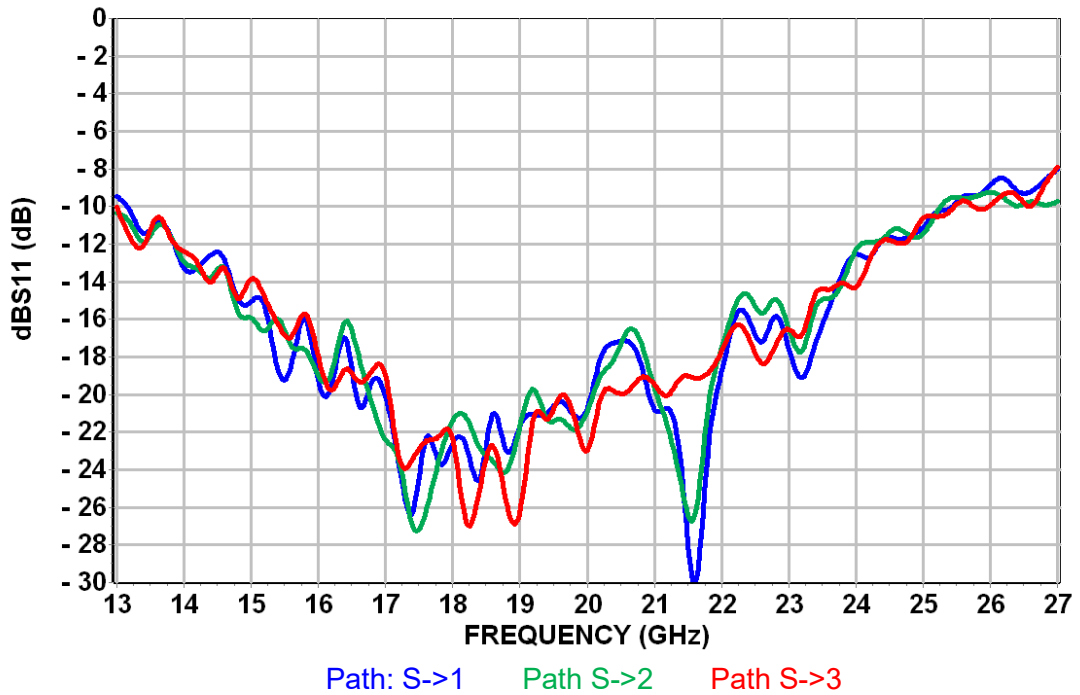
Phase Unbalance versus Frequency



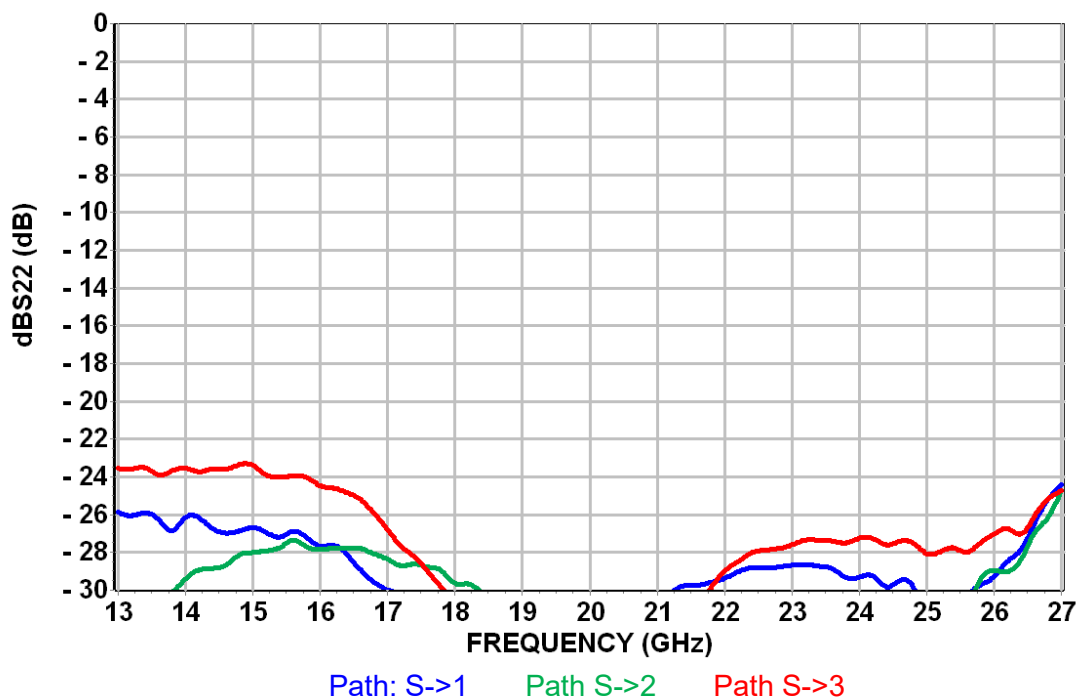
Typical Board Measurements

Tamb.= +25°C (see "Evaluation board for measurements accuracy using RF probes")

Input Return Loss (SUM) versus Frequency

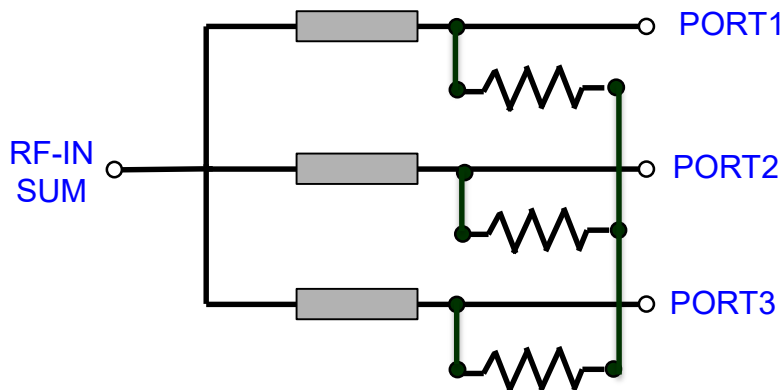


Output Return Loss (Port 1,2,3) versus Frequency



CHW4213-QAG 15-25GHz, 3-Way Power Divider/Combiner

Simplified Schematic for the 3-Way 0° 50 ohms Power Divider / Combiner



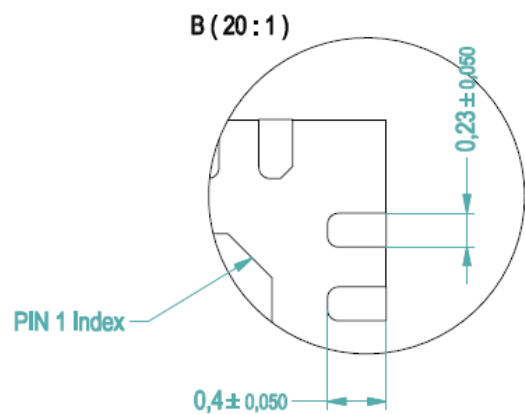
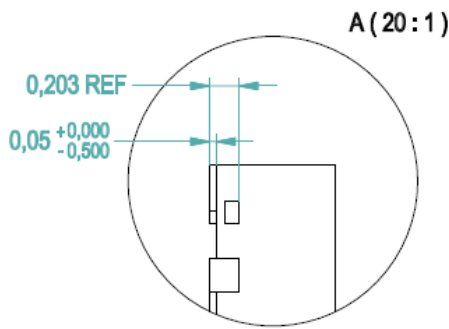
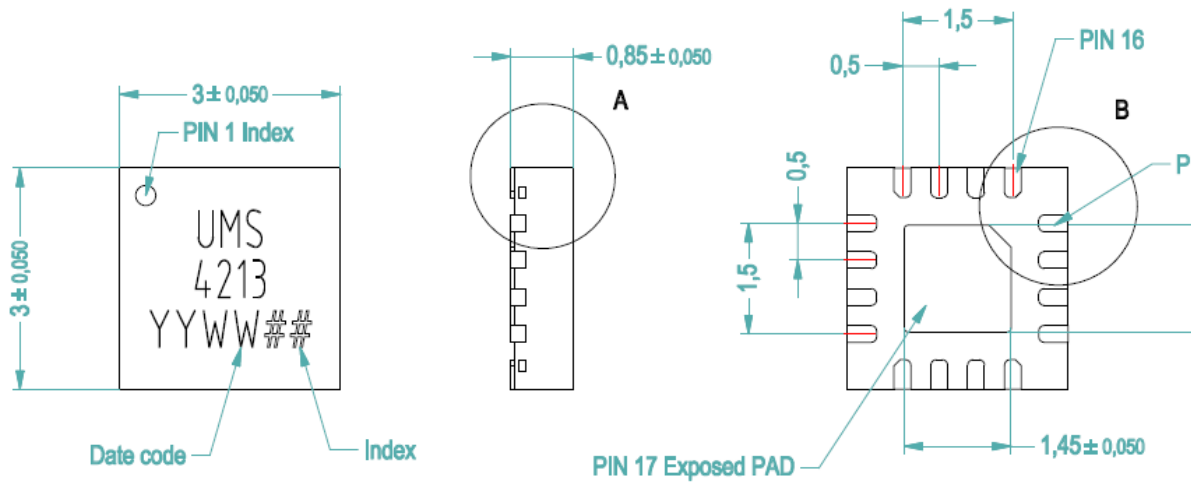
The SUM PORT has been noted S in the previous pages of this document.

Path S->1 is entering the part on the SUM port and exiting thru the PORT1 (North access of the package)

Path S->2 is entering the part on the SUM port and exiting thru the PORT2 (East access of the package)

Path S->3 is entering the part on the SUM port and exiting thru the PORT3 (South access of the package)

Package outline (1)



Lead Free	(Green)	1- GND	11- PORT2
Units :	mm	2- SUM	12- GND
From the standard :	JEDEC MO-220	3- GND	13- GND
	(VEED)	4- NC	14- PORT1
	17- GND	5- NC	15- GND
		6- GND	16- NC
		7- PORT3	
		8- GND	
		9- NC	
		10- GND	

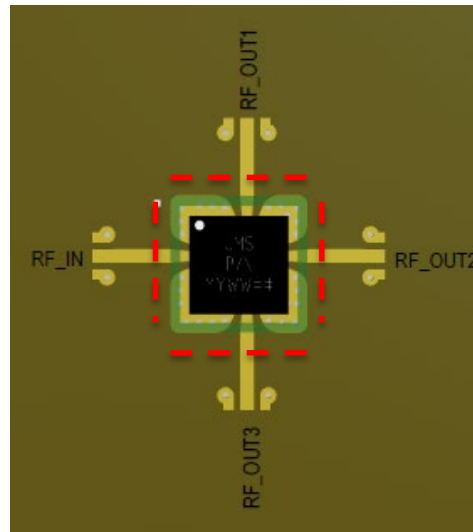
(1) The package outline drawing included to this data-sheet is given for indication. Refer to the application note AN0017 (<https://www.ums-rf.com>) for exact package dimensions.

(2) It is strongly recommended to ground all pins marked “GND” through the PCB board. Ensure that the PCB board is designed to provide the best possible ground to the package.

Evaluation board for measurements accuracy

Losses due to board are partly de-embedded: the reference planes used for Sij measurements presented previously in this document are located at 0.8mm offset from the package edges. Reference planes are showed in red on the drawing.

Note: The given Sij parameters incorporate the land pattern of the evaluation motherboard.

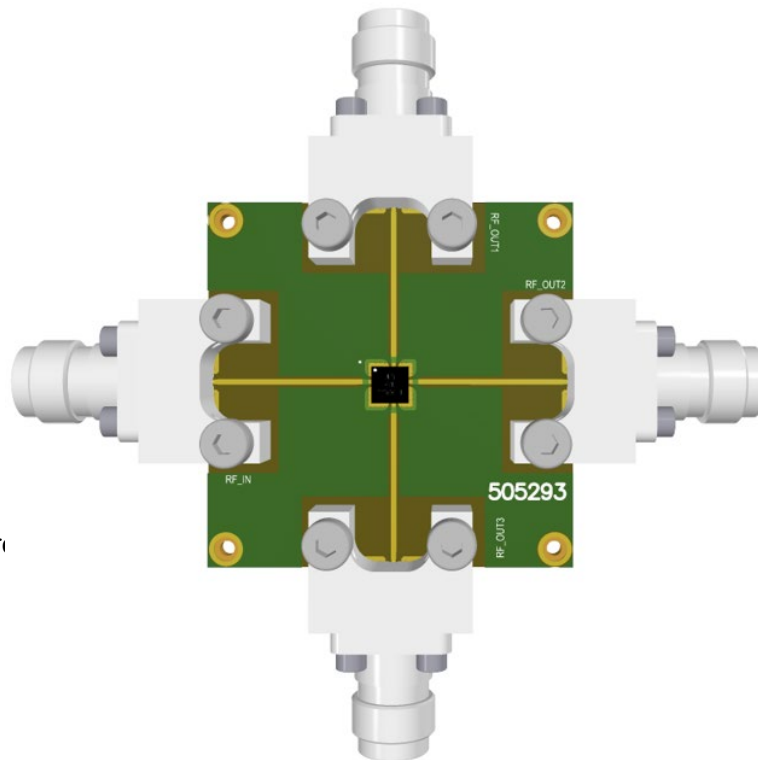


Package Information

Parameter	Value
Package body material	RoHS-compliant
	Low stress Injection Molded Plastic
Lead finish	100% matte tin (Sn)
MSL Rating	MSL1

Evaluation board for temperature characterization

- Compatible with the proposed footprint.
- Based on typically Ro4003 / 8mils or equivalent.
- Using a micro-strip to coplanar transition to access the package.
- Recommended for the implementation of this product on a module board.
- See application note AN0017 for details.



Note: All board measurement operation.

Be safe

CHW4213-QAG 15-25GHz, 3-Way Power Divider/Combiner

Recommended package footprint

Refer to the application note AN0017 available at <https://www.ums-rf.com> for package footprint recommendations.

SMD mounting procedure

For the mounting process standard techniques involving solder paste and a suitable reflow process can be used. For further details, see application note AN0017 at <https://www.ums-rf.com>.

Recommended environmental management

UMS products are compliant with the regulation in particular with the directives RoHS N°2011/65 and REACH N°1907/2006. More environmental data are available in the application note AN0019 also available at <https://www.ums-rf.com>.

Recommended ESD management

Refer to the application note AN0020 available at <https://www.ums-rf.com> for ESD sensitivity and handling recommendations for the UMS package products.

Ordering Information

QFN 3x3 package: CHW4213-QAG/XY
Tape & Reel: XY = 21

Information furnished is believed to be accurate and reliable. However **United Monolithic Semiconductors S.A.S.** assumes no responsibility for the consequences of use of such information nor for any infringement of patents or other rights of third parties which may result from its use. No license is granted by implication or otherwise under any patent or patent rights of **United Monolithic Semiconductors S.A.S.** Specifications mentioned in this publication are subject to change without notice. This publication supersedes and replaces all information previously supplied. **United Monolithic Semiconductors S.A.S.** products are not authorised for use as critical components in life support devices or systems without express written approval from **United Monolithic Semiconductors S.A.S.**

